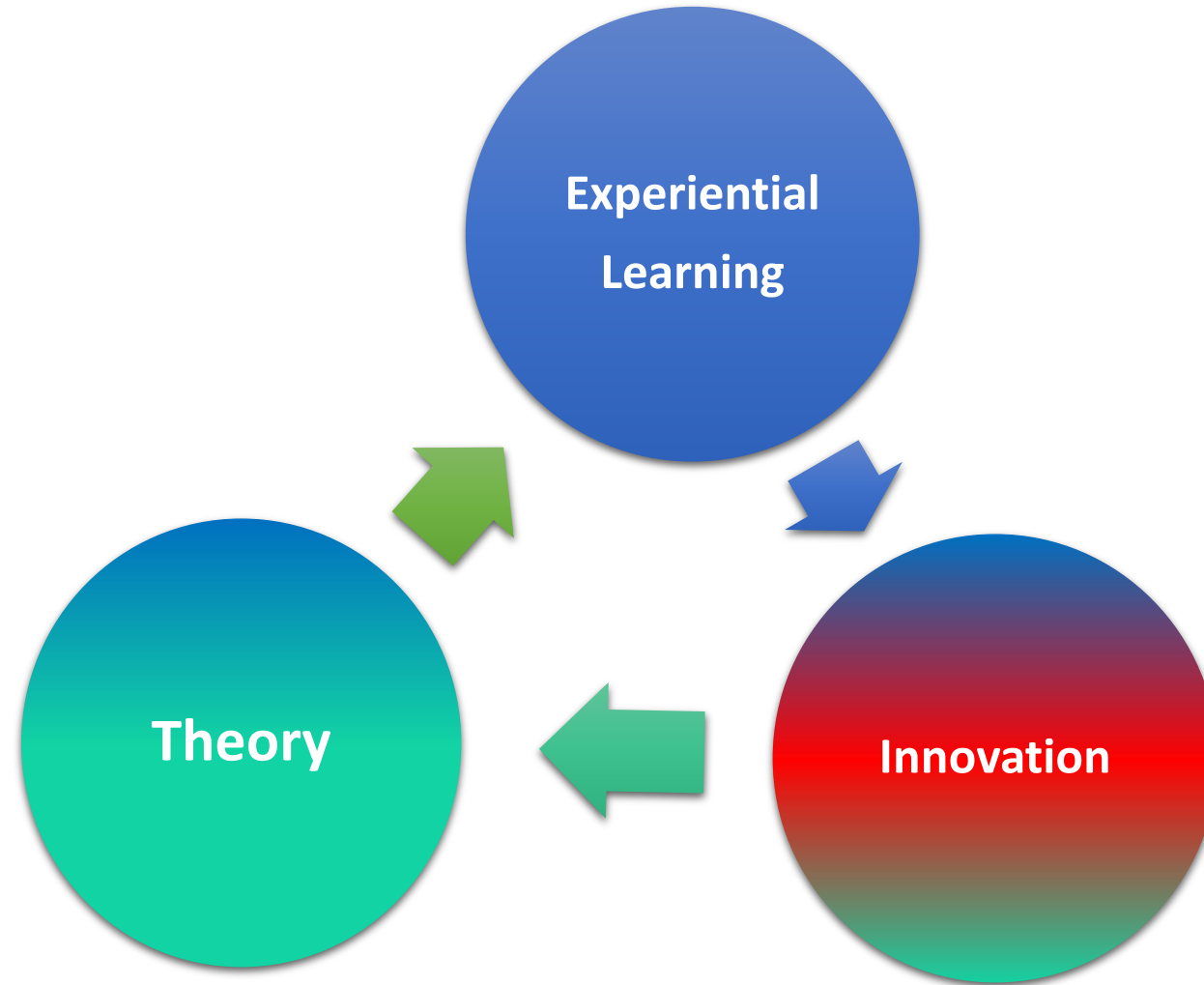


Welcome to ESET!



Electronic Systems (ESET)



An overview of the ESET Curriculum

Senior Capstone Design

Industry-oriented, team-based senior design project

Systems,
Instrumentation,
Control Systems

Real-World
(Product Development,
Lean Six-Sigma,
Electronics Test)

Wired and Wireless
Communications

Analog and Digital
Electronics

Embedded Systems

COE Math and Sciences, and TAMU CORE

** All ESET Classes Have Labs



Analog & Digital Electronics

Zachry Common Labs



ESET 210: Circuits
ESET 211: Power and Circuit
Applications
ESET 350: Electronics



Examples of projects in Embedded Systems courses

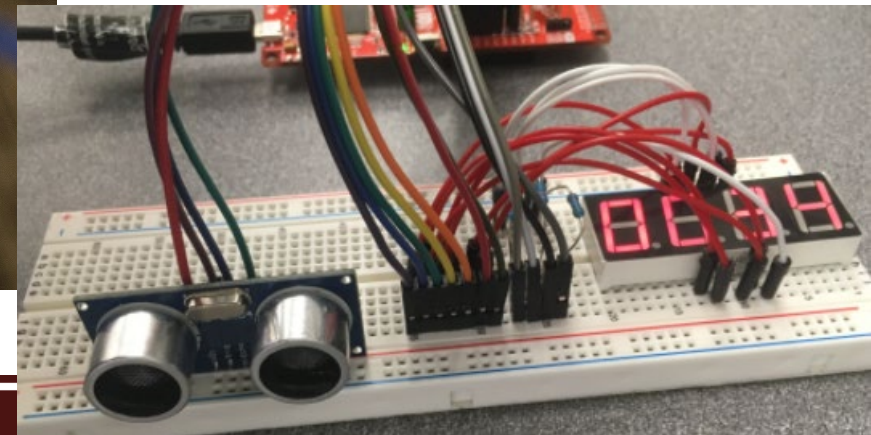
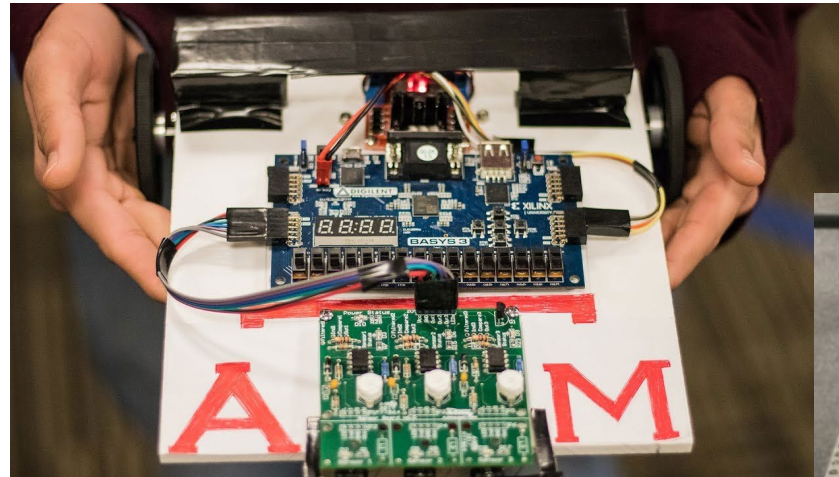
Embedded Systems

ESET 219: Digital Logic

ESET 269: Embedded C

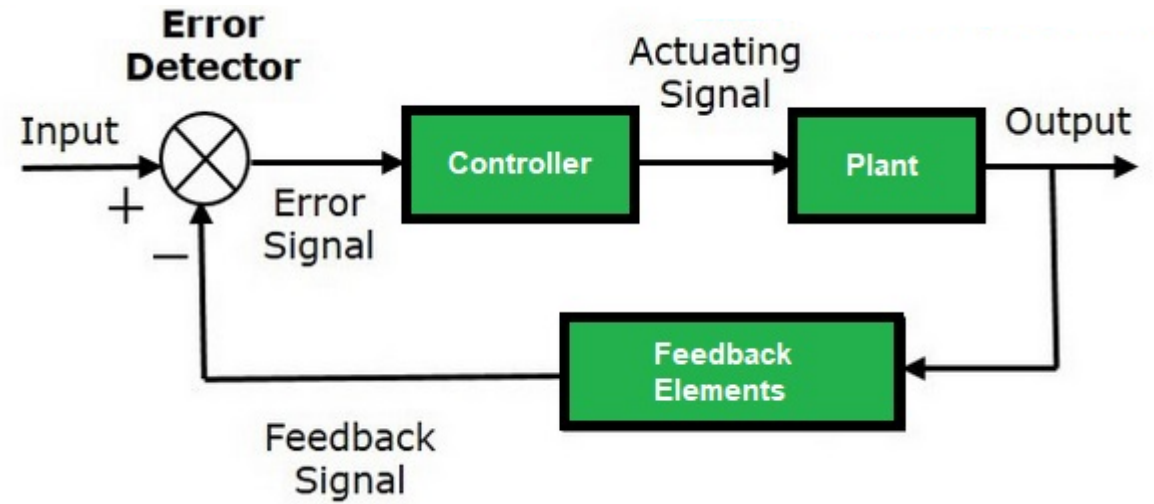
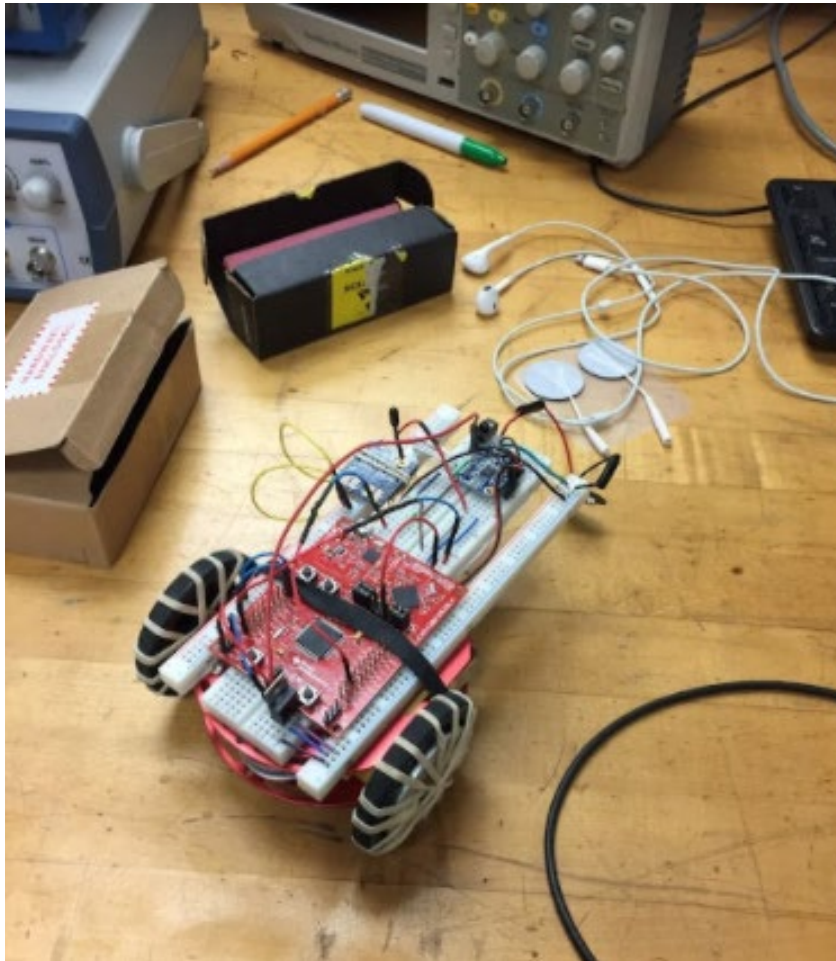
ESET 349: Microcontroller Architecture

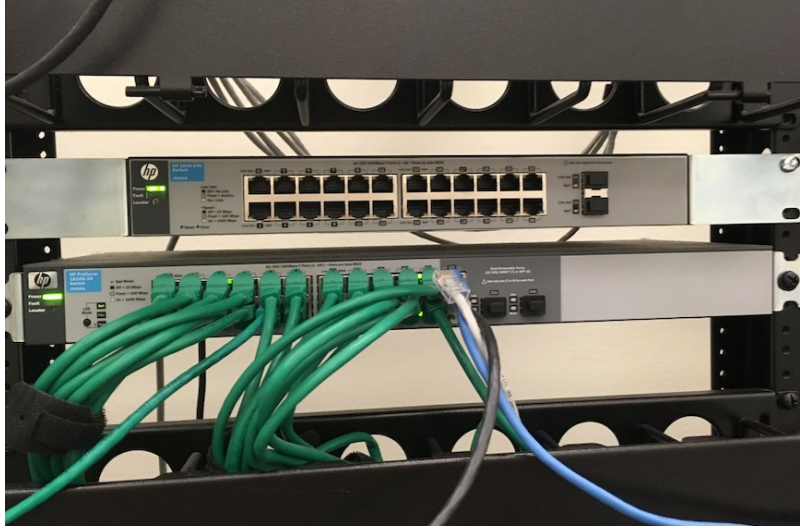
ESET 369: Embedded Software



Systems/Instrumentation & Control Systems

ESET 359: Instrumentation
ESET 462: Control Systems



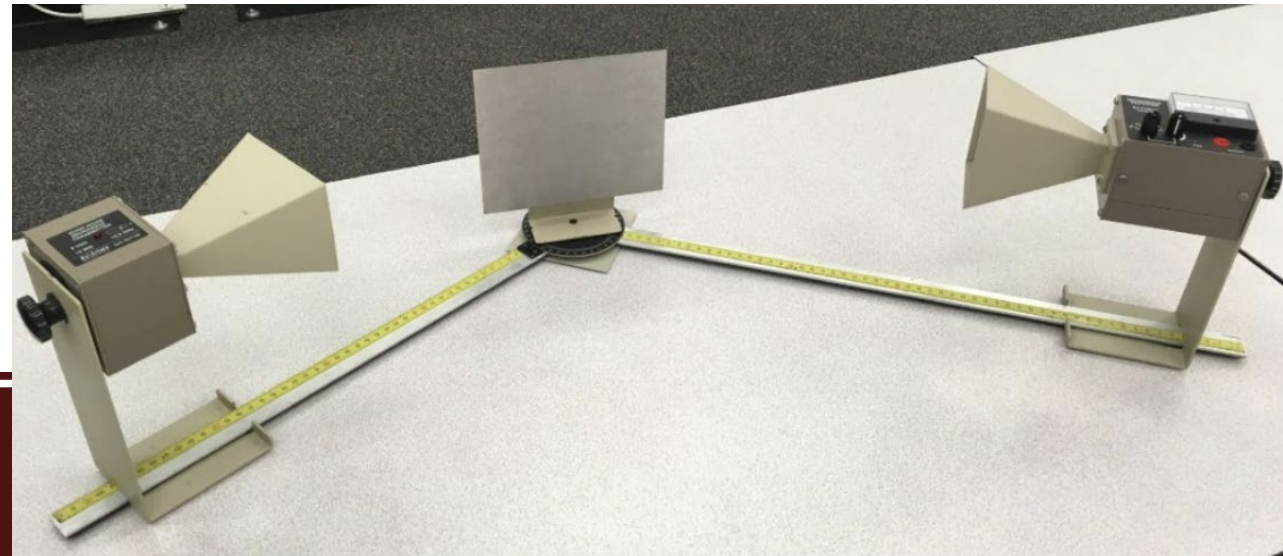


Wired & Wireless Communications

ESET 315: Computer Networks
ESET 415: Cyber Security

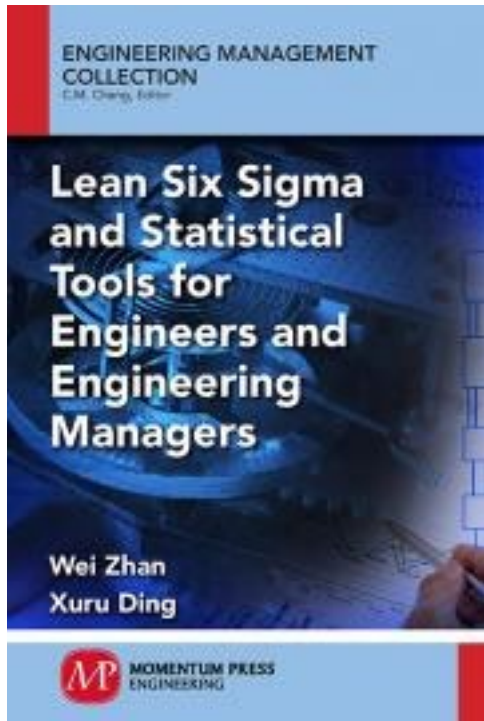


ESET 355: RF & High Frequency Systems
ESET 455: Wireless Communications



Real-world applications

ESET 329: Lean Six Sigma



ESET 352: Electronics Test



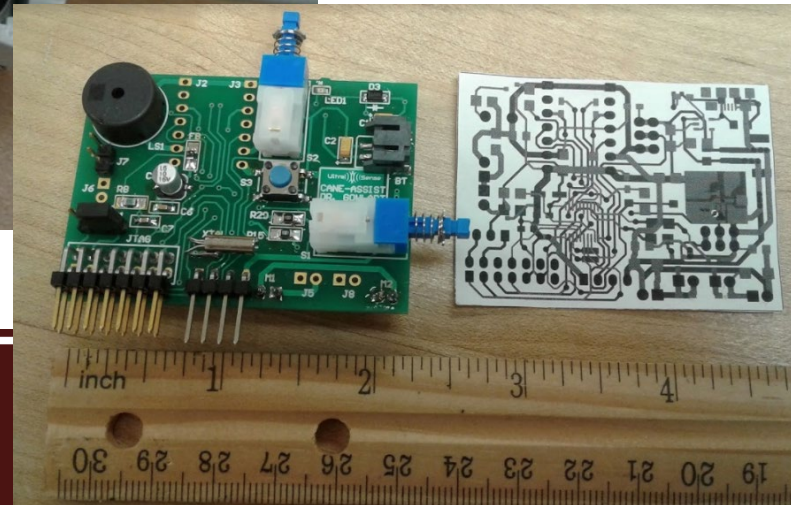
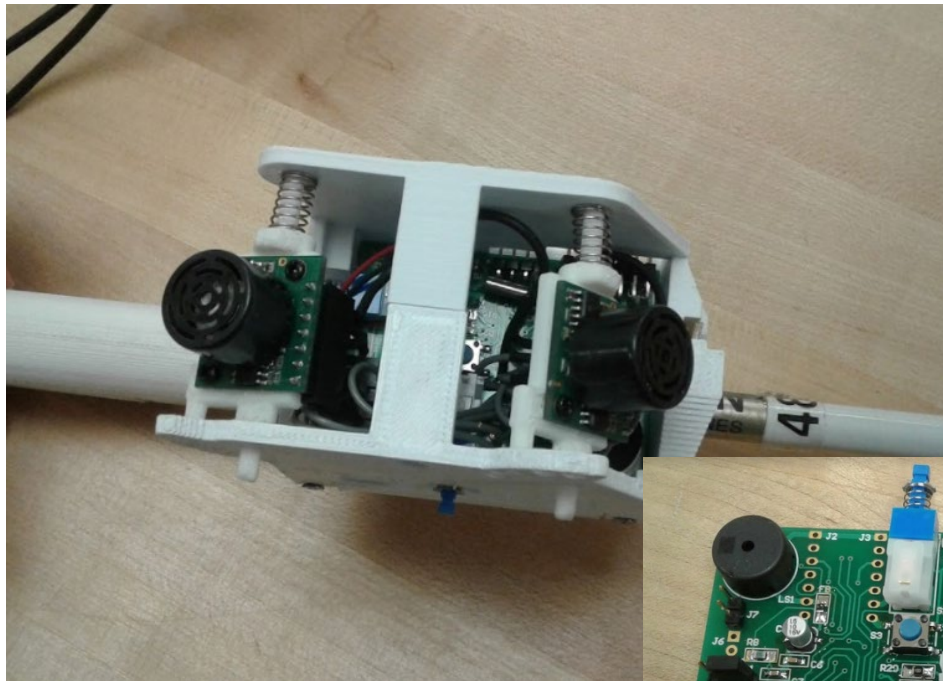
ESET 453: Validation



Engineering students develop white cane attachment to help the visually impaired

Capstone Design Experience

July 20, 2018 | By Taylor Phillips-Rodriguez



Capstone Design Experience

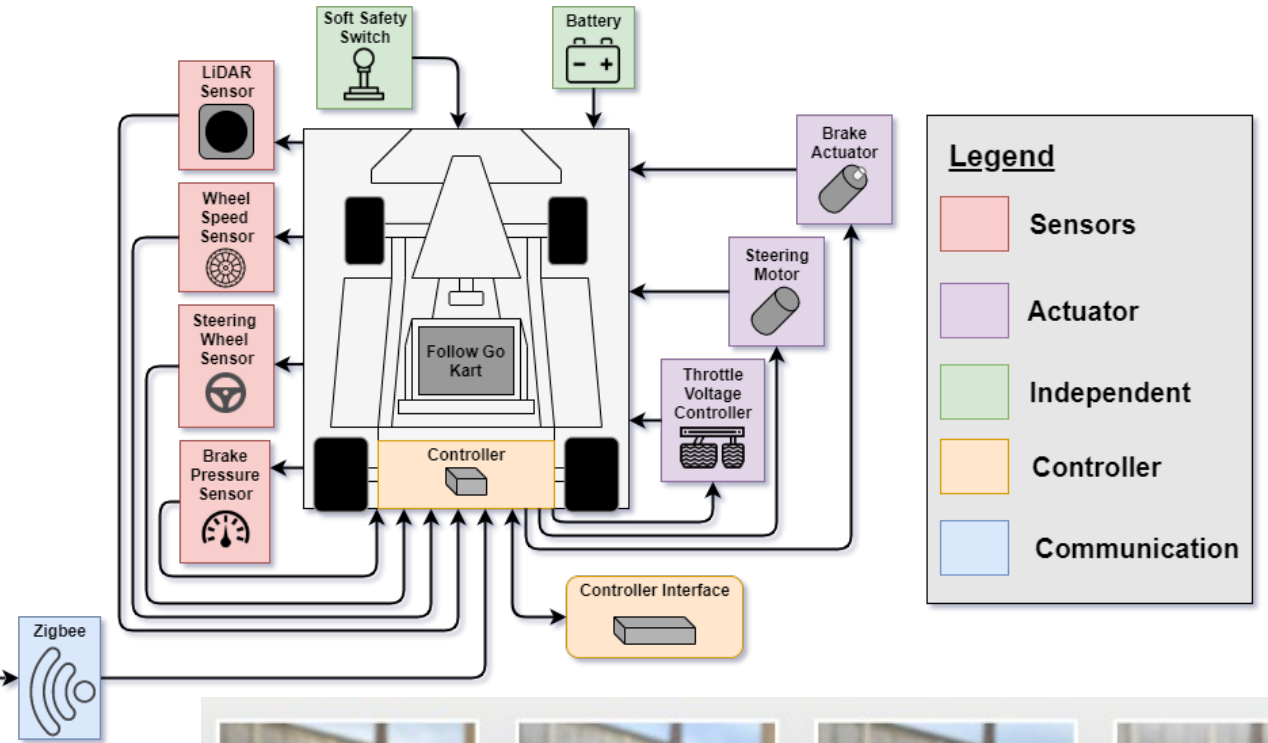
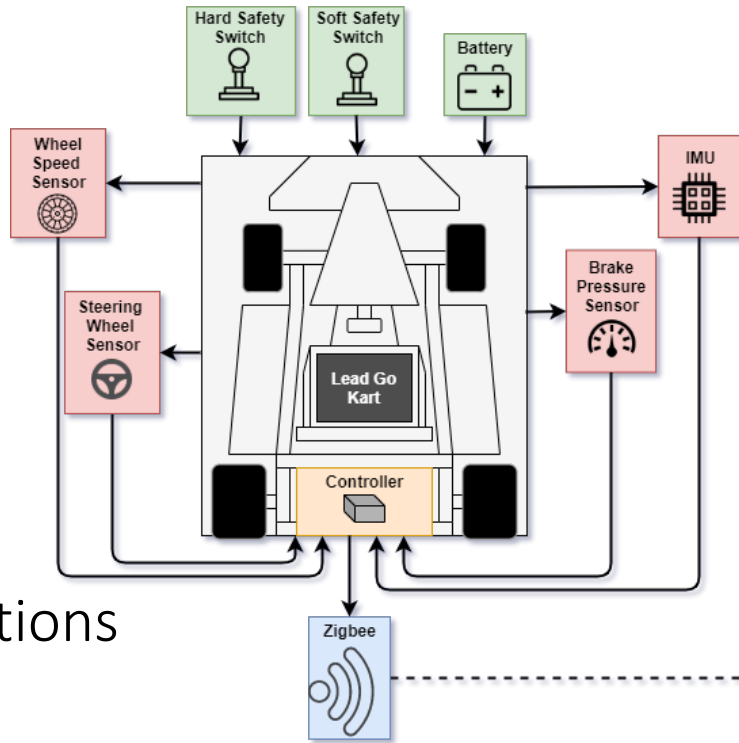
ESET capstone team wins 2016 Texas Instruments Innovation Challenge

July 20, 2016 | By Taylor Phillips-Rodriguez

DVDT successfully created and launched a communications platform for cube satellite technology (TSAT) in low-earth orbit.



Capstone Design Experience – Example of a Current Project



Vehicle to
Vehicle
Communications
(V2VC)



Tanner Reinhardt

Project
Manager



Daniel Caceres

Software
Engineer



Jarrett Hanson

Hardware
Engineer



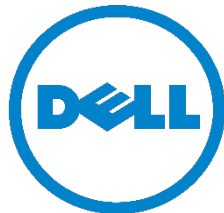
Larissa Santos

Systems
Engineer

ESET Graduates



Your natural gas company



Employer	Position
Dell Technologies	Systems Engineer
Texas Instruments	Applications Engineer
Texas Instruments	Product/Test Engineer
Splunk	Sales Engineer
Unify Energy Solutions	Engineer
Goodman Manufacturing	Control Systems Engineer
Calix, Inc.	Systems Engineer
Atmos Energy	Engineer
FEI Company	Field Service Engineer
General Motors	Operations Engineer, Software Engineer
AT&T	Business Manager

Average Salary Fall 2018 class: \$72,877*

*Career Center –<http://aggiesurveys.tamu.edu/public/Reports.aspx>

Academic Dishonesty

- ETID takes cases of academic dishonesty very seriously
- Read the policy and understand your rights and responsibilities
- Be careful what you say and do in Groupme chats
 - The internet is public information
 - If someone is cheating on the Groupme, everyone that doesn't report the cheater is cheating on the Groupme
- Falsifying or using someone else's lab data is academic dishonesty



Safety

- ETID labs use industry grade equipment
 - This equipment can be dangerous if not used properly
 - Pay attention and ask questions if unsure
- Proper safety attire is required
 - Know what is necessary and dress/prepare appropriately
 - If you are not properly attired, you cannot attend lab (and get a 0)
- The laboratory is an important part of the experiential learning offered by ETID
 - Labs take time and effort



General ETID Expectation

- We expect the faculty to treat you with respect and we expect you to treat the faculty and each other with respect
- We expect you to go to class and provide a valid university excused reason if you are absent
- We expect you to be responsible for your matriculation through the curriculum
 - The advising office is here to help
 - You should understand prerequisite structure and take degree plan seriously
 - Classes fill up, register early
 - We expect you to be able to attend classes and labs M-F 8AM to 10PM



Welcome to Your Major



Flow Charts

Registration

Holds

Degree Planners

Catalogs & Electives

Academic Calendar



ETID Department Academic Advisors

- Jason Henderson



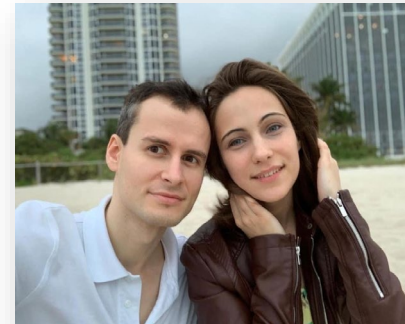
- Tara Hardin



- Bianca Cerda-Rodriguez



- Tatiana Chasynk



Registration for Courses

- Lab Safety Acknowledgement
- Terms of Use
- Distance Location Update
- Holds
 - Howdy Portal-My Profile
 - Ex. Financial Aid, Degree Planner, Probation, etc.
 - Check holds for contact phone numbers
- Registration Worksheet
 - Can start building your schedule before registration opens



Schedules: To Build Your Own

- Use your **degree evaluation** NOT planner: generate evaluation, 'detailed'
- Check restrictions & details (blue link under course name, or click course title)
- Completed first: **MATH 151, MATH 152, PHYS 206, CHEM 107/117**
- Creative Arts, Lang, Phil & Culture, Social & Behavioral Sciences
 - Can double count as Inter. & Cult. Div.'s (ICD)
 - Found at <http://www.core.tamu.edu> or <http://icd.tamu.edu>



Common Registration Errors

Student Attribute Restriction: Check for honors sections or study abroad sections

Prerequisite and test score error: Restrictions and details will show prerequisites, or check flowchart and catalog

Major, Field of Study, or College Restriction: Click on restrictions and details, or click course title, check for M sections

Class Restriction: If you're a Freshman/Sophomore trying to take Junior/Senior level classes, wait until your hours post, then register. If nothing left to take then fill out override request.



Registration Errors

- <http://engineering.tamu.edu/etid/academics/academic-forms>
- Course override request or co enrollment
- Courses outside the ETID Department
 - Contact that department in order to get an override or get forced in.
 - We can force you into ONLY MMET, ESET, MXET, & IDIS



Important Information

Flowcharts

Different for every catalog (Academic Year)

Degree Planners

Due Sept. 30th every year



Minors

- **MXET:** Embedded Systems, Cybersecurity, Computer Science



Minimesters, Summer Courses & Electives

- No ETID mini-mester classes available
- Summer Course Lists
- Tech elective and Directed elective lists
- Transcripts go to Registrar's Office
- Some possible resources:

wtc.edu (West Texas College)
vct.org (Virtual College of Texas)
tccns.org (Texas Common Course)
TAMU Course Equivalency



ENTC 399-High Impact

- ENGR^x
 - Required for your catalog
- Must complete an approved experience
 - Includes internships, study abroad, undergraduate research, etc.
- 0 credit hour online course
 - Reflection paper over experience
- Approval forms:
 - <https://engineering.tamu.edu/etid/academics/academic-forms.html>



Study Abroad Opportunities

- MMET Spring Reciprocal Exchange Program
 - Wales, Swansea University
 - Full Semester



MSET Fast Track Option

- ESET, MMET, and MXET
 - 30 credit hour resident program
- 4+1 Program
 - Up to 9 graduate hours during undergraduate degree
- 3.0 GPA Requirement
- Apply by February 1st or Nov. 1st of Junior year





TEXAS A&M UNIVERSITY

Department of Engineering
Technology & Industrial Distribution

Did you know that ETID has a LinkedIn group
to connect current and former students, faculty, and industry?



Join today to network, view job postings, read the latest ETID news and more!

tx.ag/ETIDLinkedIn

Office Procedures

Sign In

iPad, sends email notification to advisor

Preparation for Appointments

UIN, courses, forms, CRN numbers

Appointments

Navigate online appointment system

Navigate App

Walk-ins

TBA

Emails

etid-advising@tamu.edu



Questions?



Texas A&M University



Fermier Hall





**ENGINEERING TECHNOLOGY
& INDUSTRIAL DISTRIBUTION**
TEXAS A&M UNIVERSITY



@tamuetid
#TAMUETID



Texas A&M
Department of
Engineering Technology
& Industrial Distribution

Undergraduate Advising Office
120 Thompson Hall
979-845-4951

Web: <http://engineering.tamu.edu/etid>

Email: Etid-advising@tamu.edu

Use the following link to make an advising
appointment:

<https://tamu.campus.eab.com/student/appointments/new>